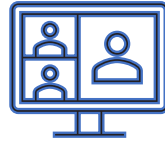


ONLINE – AT HOME LEARNING DAY (DAY 8)

CONNECTED ON TEAMS

9:00AM - 9:30AM	Morning Meeting
9:30AM - 10:00AM	Math Lesson
10:00AM - 10:30AM	Additional Time to connect with grade level classroom teacher as needed



TIME ONLINE
9:00-10:00

ON SEESAW FROM SPECIALISTS

Seesaw 5 - 15 Minutes	Kindergarten: Art Lesson & Activity
	Grade 1: P.E. Lesson & Activity
	Grade 2: Media Lesson & Activity
	Grade 3: Music Lesson & Activity
	Grade 4: Health/P.E. Lesson & Activity
	Grade 5: Counselor Lesson & Activity



5 - 15
MINUTES

STUDENT INDEPENDENT EXPECTATIONS

20 Minutes	Seesaw Activity connected to Lesson
20 Minutes	Choice Reading
20 Minutes	iRead for Gr. K - 2 Pebble Go for Gr. 3 - 5
20 Minutes	Dreambox
20 Minutes	Intervention/Enrichment as Assigned
Personalized	Special Services Goal Work as Assigned

