

November 2009

Volume 3

# West Fargo Public Schools *State of Our Schools*

By 2011 all students will achieve academic growth for two consecutive years as measured by standardized assessments.

*West Fargo, North Dakota 58078*



*West Fargo High School  
Community High School  
Sheyenne Ninth Grade Center  
Cheney Middle School  
STEM Middle School  
Aurora Elementary School  
Eastwood Elementary School  
Early Childhood Special Education*

*L.E. Berger Elementary School  
Harwood Elementary School  
Horace Elementary School  
South Elementary School  
Westside Elementary School  
C.A. Lodoen Kindergarten Center  
Osgood Kindergarten Center*

### Inside this issue:

AP Course Enrollment	3
Students Failing English Nine	4
Rigorous Coursework	5
Math Indicators	5
Teacher Demographics	6
Average Class Size	7
Student to Computer Ratio	8
English Language Learners	9
Big Five District Comparison	10

## **A Message from the Superintendent** **Dr. Dana Diesel Wallace**

In the fall of 2006 we began crafting the district's first strategic plan. That plan was adopted by our school board in 2007 and includes one goal for the district, which you can see at the top of this page. When we set the goal, 48% of our students were meeting it. We are very pleased to share that today, 96.3% of WFPS students have met Goal 2011! Through the hard work of our board, our dedicated 1,000 employees, and nearly 7,000 students and their parents, we have nearly met our goal and have done so two years ahead of schedule!

Along the way to Goal 2011 we have had other accomplishments, to include:

\*Having the first early-college high school in North Dakota

\*Being the first school district in ND to implement AVID—a college preparatory program for students in the academic middle

\*Winning a \$1.2 million federal grant to support wellness education in grades K-12

\*Being the first in ND to have both a Newcomer Center and Immersion Center for our new Americans

\*Being one of but a few schools in the country to offer Personalized Education Plans to our students

You can find more about our story of success, and some of



our continuing challenges, as you read through this year's "State of Our Schools."

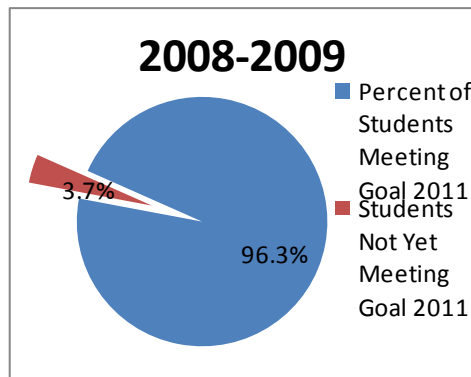
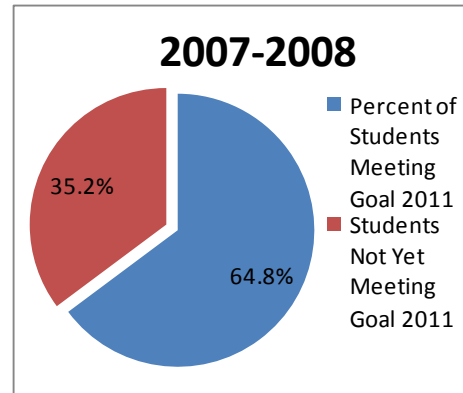
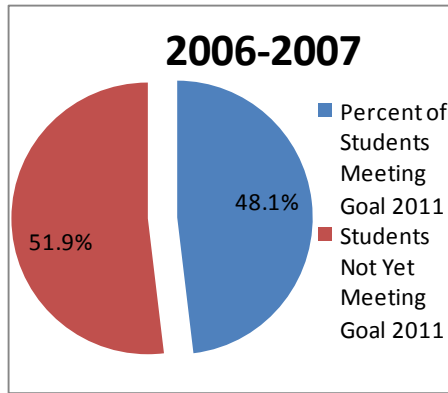
We won't be resting on our laurels, however. Instead, we will begin crafting a new goal and strategic plan to serve all of our students well!



## Measures of Academic Progress

Measures of Academic Progress (MAP) are assessments taken by West Fargo Public School students in grades kindergarten through eleven. Students' academic progress is measured in reading, mathematics, and language usage along a continuous scale. Therefore, growth can be measured within a school year as well as from year to year. Thus, MAP provides students, teachers, and families with a constant measure of academic growth throughout the student's academic career. Listed below are the percentages of students meeting Goal 2011 by year. Goal 2011 seeks to have *all* students achieving academic growth for two consecutive years.

**NDSA measures academic proficiency. MAP measures academic growth. Both are indicators of student achievement.**



## NDSA Proficiency

North Dakota State Assessments (NDSA) have been given statewide since 2003-2004. Percentages shown here indicate the percent of WFPS students meeting or exceeding state proficiency levels at each grade level and ND state averages for the last three years.

	2008-2009		2007-2008		2006-2007	
	WFPS	State	WFPS	State	WFPS	State
Reading: Grade 3	81%	82%	77%	76%	80%	81%
Reading: Grade 4	79%	79%	80%	75%	82%	81%
Reading: Grade 5	71%	73%	72%	67%	77%	75%
Reading: Grade 6	80%	74%	72%	72%	83%	78%
Reading: Grade 7	83%	82%	82%	77%	81%	80%
Reading: Grade 8	78%	76%	77%	73%	71%	75%
Reading: Grade 11	71%	68%	66%	65%	74%	72%
<b>Math</b>						
Math: Grade 3	84%	88%	86%	86%	86%	85%
Math: Grade 4	79%	80%	74%	77%	87%	79%
Math: Grade 5	79%	81%	84%	79%	82%	81%
Math: Grade 6	87%	82%	84%	78%	86%	82%
Math: Grade 7	82%	77%	81%	77%	84%	77%
Math: Grade 8	73%	70%	74%	70%	66%	66%
Math: Grade 11	58%	56%	55%	55%	59%	57%

## Advanced Placement Courses

Advanced Placement (AP) Courses give students the opportunity to participate in college level curriculum. This year WFPS students are enrolled in the following AP courses: AP English (11 and 12), AP Biology, AP Calculus, AP US Government, AP French, AP Chemistry, and AP US History. AP courses and exams are governed by the College Board. Many universities award credit for students earning a three or higher on the AP exam. AP examinations are scored on a scale from one to five.

Year	Number of unique students enrolled in AP courses	Percent of eligible students taking at least one AP course	Number of students taking AP exams	Percent of students earning a 3 or greater on AP exam
2002-2003	81	11.8%	28	23%
2003-2004	85	12.1%	22	13%
2004-2005	87	13.1%	37	29%
2005-2006	90	13.1%	49	37%
2006-2007	97	14.5%	36	21%
2007-2008	105	14.3%	43	58%
2008-2009	136	15.7%	55	59%
2009-2010	174	19.2%	n/a	n/a



## ACT Scores

The ACT is a college entrance exam meant to give students and universities predictive information on future academic success in college. Universities typically use the ACT or the SAT as one indicator of academic achievement.

***Beginning in 2009-2010, the ACT is required for all juniors in North Dakota.***



Year	Number tested	WFPS average composite score	National comparison value (all students/Caucasian students)
2001-2002	233	21.7	20.8/21.7
2002-2003	251	21.8	20.8/21.7
2003-2004	278	21.1	20.9/21.8
2004-2005	227	21.8	20.9/21.9
2005-2006	271	21.9	21.1/22.0
2006-2007	246	22.0	21.2/22.1
2007-2008	247	22.1	21.1/22.1
2008-2009	243	21.7	21.1/22.2

## Graduation Rates

Year	WFPS On Time Graduation Rate (ND DPI)	WFPS On Time Graduation Rate (NGA method)	ND Average (ND DPI)
2002-2003	79.2%		88.2%
2003-2004	86.6%		91.5%
2004-2005	89.7%		91.6%
2005-2006	77.0%	74.0%	86.7%
2006-2007	81.8%	73.0%	86.2%
2007-2008	81.6%	71.6%	87.7%
2008-2009	Not available	70.2%	Not available

Across the nation, graduation rates are calculated using a wide variety of methods. Shown here are calculations using two of those methods. One, used by the North Dakota Department of Public Instruction (DPI). The second using the respected and recommended National Governor's Association model.

### Cost of Dropouts

*Each year nearly 2,000 students in North Dakota do not graduate with their peers. Dropouts from the class of 2008 cost the state more than \$460 million in lost wages, taxes, and productivity over their lifetimes.*

Research on graduation rates indicates that students who fail English 9 are at high risk to drop out of high school. To the right are the percentages of WFPS ninth graders who have failed this course.

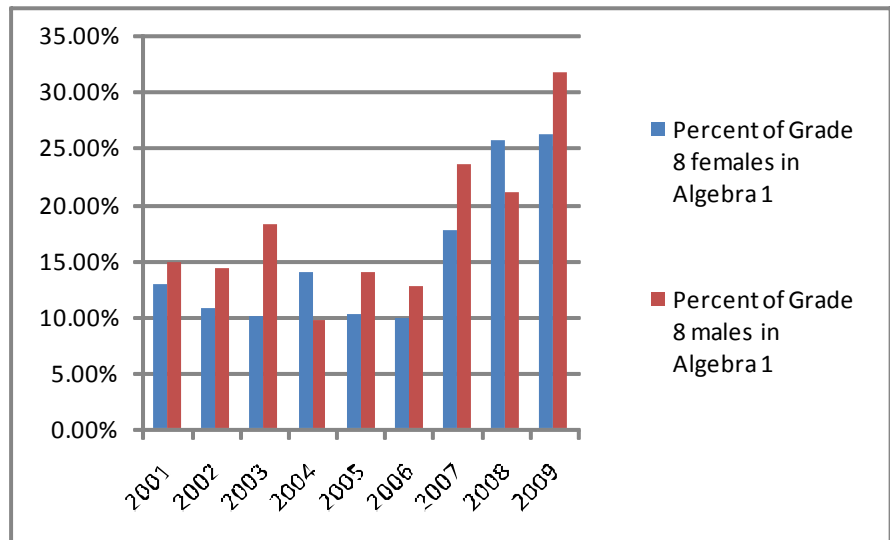
## Students Failing English

Year	Percent of 9th graders failing English 9
2002-2003	10.32%
2003-2004	13.95%
2004-2005	13.48%
2005-2006	10.08%
2006-2007	11.30%
2007-2008	8.37%
2008-2009	2.37%



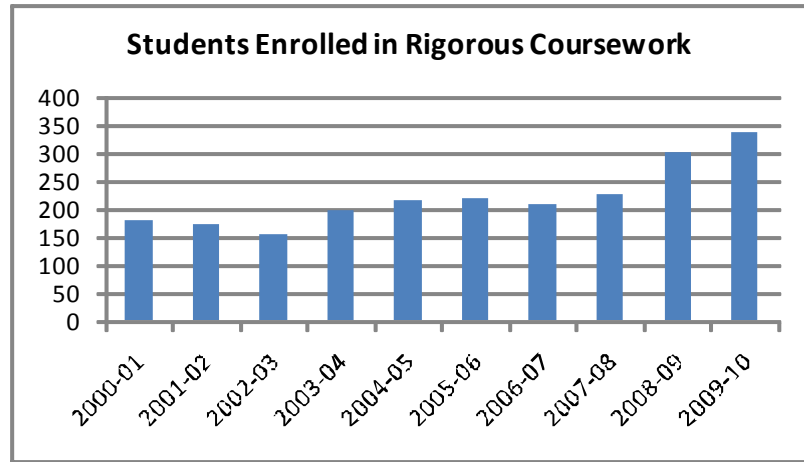
## Algebra 1 in Grade 8

Algebra 1 is a pivotal course in the academic path of students. It is the foundational curriculum for future mathematical coursework. Depicted in this chart is the percent of male and female WFPS 8th grade students enrolled in Algebra 1. The national average is 50%.



## Rigorous Coursework

The chart at the right represents an unduplicated count of students enrolled in rigorous coursework. In 2008-09 30.53% of juniors and seniors took at least one rigorous course. While the total number of course enrollments in rigorous courses nearly doubled, our challenge lies in increasing the number of individual students enrolled in such. Students' future success in college is best predicted by the extent to which they participated in rigorous coursework in high school. Rigorous coursework may include AP, dual credit, and honors level courses as well as capstone courses.



## Reading

One measure of proficiency is performance on MAP assessments. "At grade level" established through national norms provided by the Northwest Evaluation Association (NWEA). Approximately 2.3 million student assessment scores were used to establish the norm.

Percent of WFPS students reading at grade level at the end of grade 6 as measured by MAP

School Year	Percent of Students
2004-2005	50.7%
2005-2006	58.6%
2006-2007	63.7%
2007-2008	60.6%
2008-2009	66.3%

## Math

Percent of students at grade level in mathematics at the end of grade 6 as measured by MAP

School Year	Percent of Students
2004-2005	58.3%
2005-2006	63.0%
2006-2007	61.5%
2007-2008	72.1%
2008-2009	70.3%

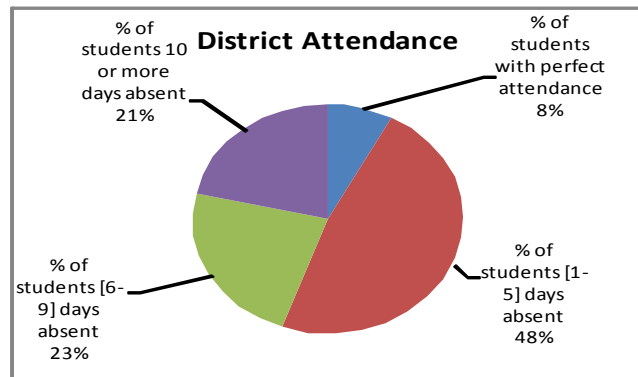


### Teacher Demographics: Full time equivalents (FTE)

The West Fargo teaching FTE count includes Classroom teachers, Librarians, Counselors, School Psychologists, Speech Pathologists, School-to-Work Coordinators, ELL Liaisons, Reading Coordinators, Special Education Coordinators, Technology Integration Coordinators, and Curriculum Integration Coordinators.

School Year	Number of Students	Total FTE	Student/FTE Ratio
2001-2002	5180	347.48	14.9
2002-2003	5284	354.88	14.9
2003-2004	5406	371.63	14.5
2004-2005	5584	386.85	14.4
2005-2006	5773	406.25	14.2
2006-2007	5982	432.46	13.8
2007-2008	6209	469.59	13.2
2008-2009	6698	540.51	12.4
2009-2010	6974	571.36	12.2

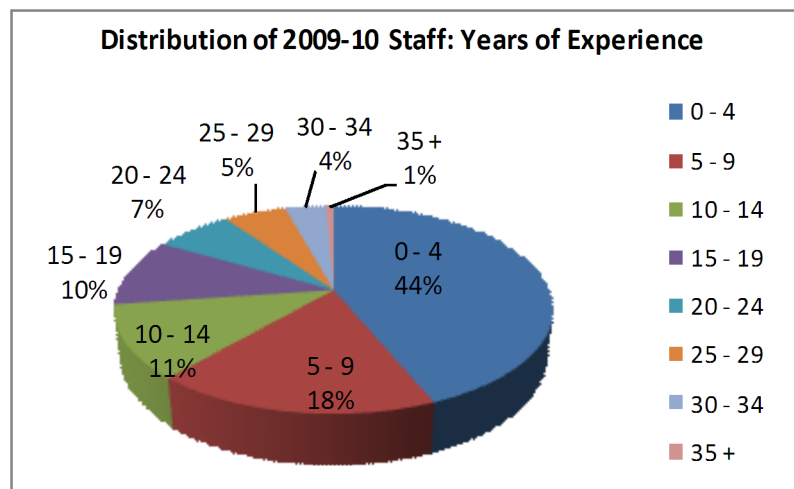
### Student Attendance



The percent of students absent fewer than 6 days has increased from 49% in 2006-2007 to 57%.

### Teacher Demographics: Experience

WFPS has a wide range of experience levels in the classroom. The 2009-2010 teaching staff is represented in the chart at the right. Sixty-two percent of our current teaching staff has fewer than 10 years of classroom experience.



## Poverty Rates



Year	Number of Students	Percent of student population
2001-2002	325	6.44%
2002-2003	1000	19.33%
2003-2004	971	17.95%
2004-2005	1192	21.88%
2005-2006	1282	22.33%
2006-2007	1330	22.63%
2007-2008	1714	25.9%
2008-2009	1799	27.10%
2009-2010	2032	29.14%

***Poverty rates are measured based on parents' enrollment of their students in the National School Lunch Program.***

## Student Enrollment

West Fargo Public Schools is the fastest growing school district in the state of North Dakota. For this school year approximately 300 middle school students are housed at the STEM center and Sheyenne. This has alleviated some overcrowding at Cheney Middle.

Year	Number of Students	Percent Increase from previous year
2001-2002	5180	1.7%
2002-2003	5284	2.0%
2003-2004	5406	2.3%
2004-2005	5584	3.3%
2005-2006	5773	3.4%
2006-2007	5982	3.6%
2007-2008	6209	3.8%
2008-2009	6698	7.9%
2009-2010	6974	4.1%

## Average Class Size

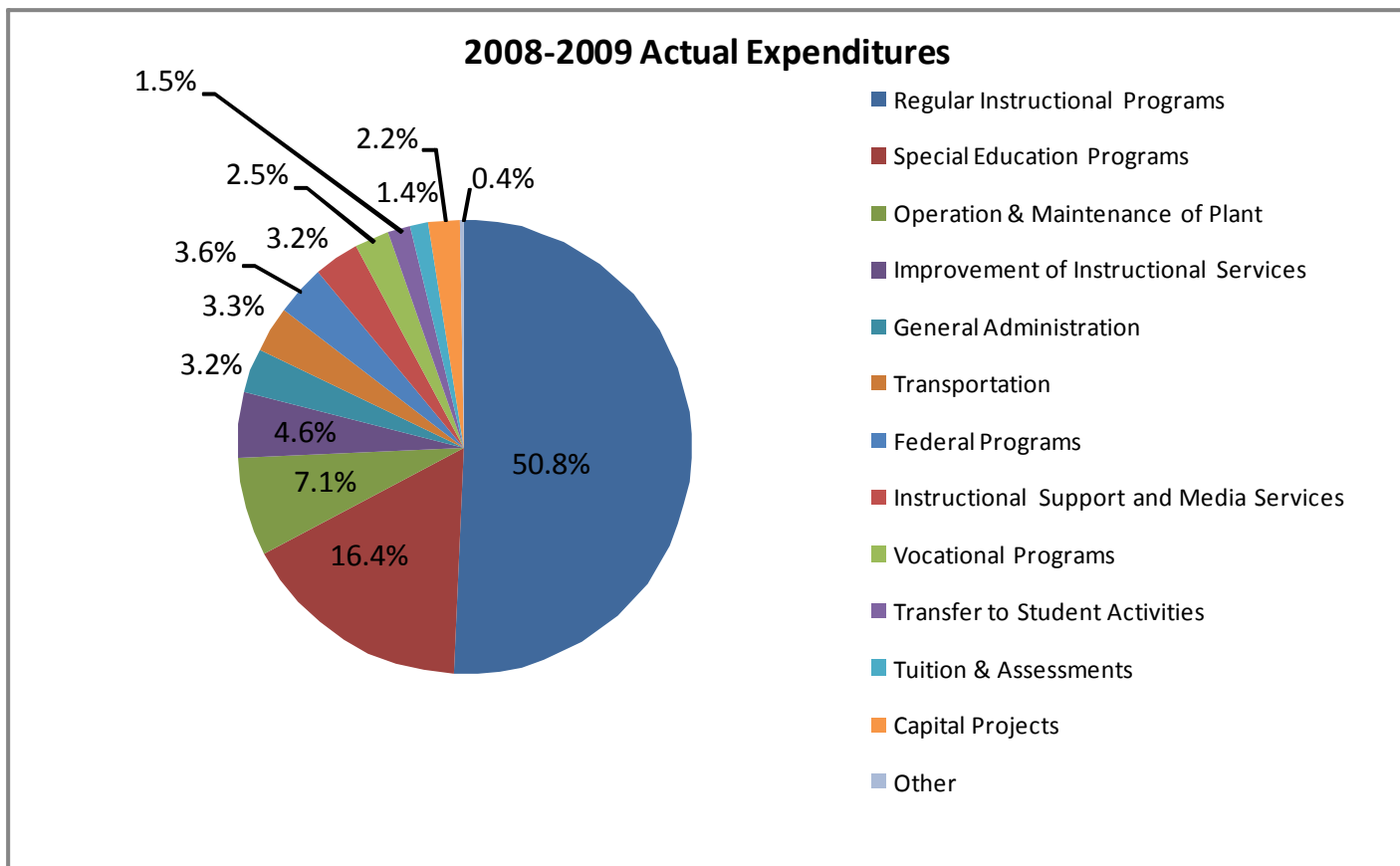
Year	Elementary	Secondary
2001-2002	22.4	24.0
2002-2003	22.5	23.6
2003-2004	22.4	24.0
2004-2005	21.8	22.5
2005-2006	21.6	22.7
2006-2007	21.9	22.3
2007-2008	20.9	23.3
2008-2009	21.7	21.9
2009-2010	21.8	19.5



## Technology

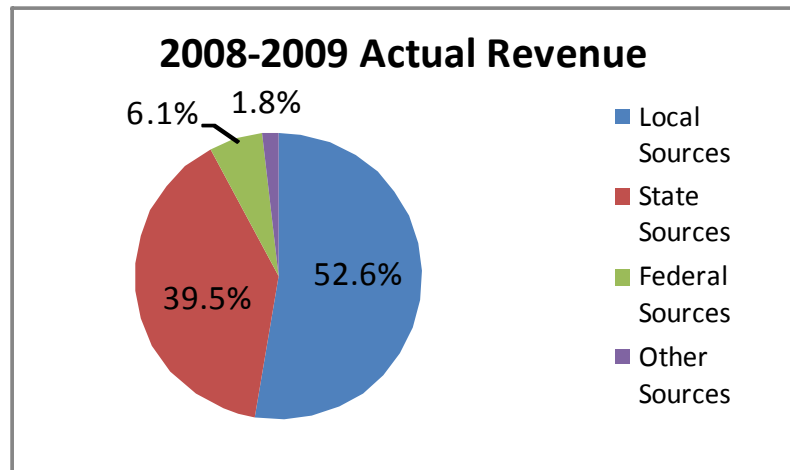
	Year	Number of	Number of	Student to Computer
Technology for instructional use has been a priority in the West Fargo Public Schools for many years. The number of computers represents all computers available for instructional use. It does not include computers for the business operations of the district.	2001-2002	5180	1025	5.1: 1
	2002-2003	5284	1003	5.3: 1
	2003-2004	5406	1050	5.1: 1
	2004-2005	5584	1229	4.5: 1
	2005-2006	5773	1350	4.3: 1
	2006-2007	5982	1544	3.9: 1
	2007-2008	6209	1723	3.6: 1
	2008-2009	6698	2106	3.2: 1
	2009-2010	6974	2515	2.8: 1

## Financial Expenditures

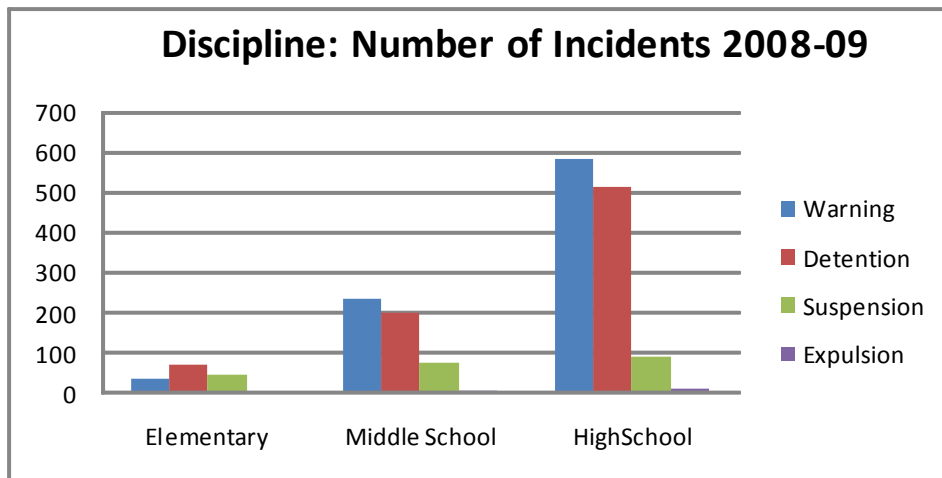


## Financial Revenue

*The 2009-2010 general fund budget totals approximately sixty-three million dollars.*



## Student Discipline



## Special Education and English Language Learner Enrollments



The national average of students within a district on an Individualized Education Plan is 13.8%. The national average of students in a school system receiving services as English Language Learners is 10%.

Year	Percent of enrollment with an IEP	Percent of enrollment ELL
2001-2002	11.7%	0.4%
2002-2003	11.6%	3.2%
2003-2004	13.0%	3.29%
2004-2005	14.0%	4.13%
2005-2006	14.3%	4.97%
2006-2007	15.0%	5.87%
2007-2008	14.0%	6.68%
2008-2009	12.6%	7.21%
2009-2010	12.5%	8.02%



**School Board Members**

Tom Gentzkow, President  
 Karen Nitzkowski, Vice President  
 Kay Kiefer  
 Duane Hanson  
 Ben Koppleman  
 Angela Korsmo  
 Patti Stedman

**District Leadership Team**

Dr. Dana Diesel Wallace, Superintendent  
 Louise Dardis, Assistant Superintendent  
 Mari Bell, Special Education Director  
 Pete Diemert, Building and Grounds Director  
 Robin Hill, Human Resources Director  
 Rob Kaspari, Technology Director  
 Brad Redmond, Transportation Director  
 Holly Ripley, Knowledge Management Director  
 Jan Sliper, Food Services Director  
 Joe Sykora, Business Manager

**GOAL 2011**

West Fargo Public Schools  
 207 Main Avenue West  
 West Fargo, North Dakota 58078  
 Phone: 701-356-2000

[www.west-fargo.k12.nd.us](http://www.west-fargo.k12.nd.us)



The following information is taken directly from the most recent School District Profile published by the North Dakota Department of Public Instruction.

**How do we compare?**

Metric	West Fargo Public Schools	Fargo Public Schools	Bismarck Public Schools	Grand Forks Public Schools	Minot Public Schools
Total Enrollment (2007-2008)	6,179	10,493	10,638	7,192	6,243
Graduation Rate (2007-2008)	81.6%	89.2%	86.6%	78.9%	81.3%
NDSA percent proficient in grade 8 math-	74.5%	71.6%	70.4%	72.2%	65.7%
NDSA percent proficient in grade 8 reading (2007-2008)	75.8%	73.3%	79.5%	77.1%	74.0%
ACT average score (2006-2007)	21.9	23.2	21.8	22.2	21.9
Enrollment change from 2006-2007 to 2007-2008	+4.7%	-1.4%	-0.1%	-1.7%	-2.6%
Teachers with advanced degrees (2006-2007)	50.2%	50.2%	39.1%	65.6%	43.3%
Percent of district expenditures on instructional salaries and benefits(2008-2009)	74.6%	67.6%	66.9%	72.3%	66.9%